

# GO Elevation Stage

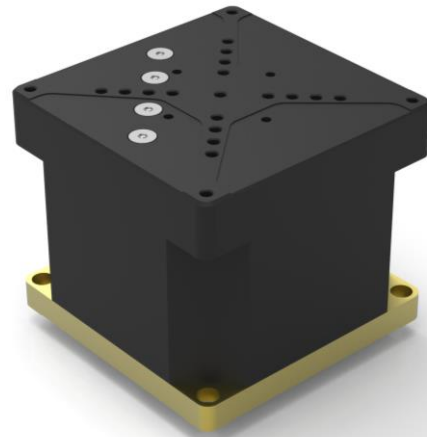
## Powerful & Precise

## Vertical Motion

### Nanometer Resolution Vertical Motion

The PRECIBEO GO Elevation Stage lift up to 500 grams vertically, with smooth continuous motion and are self-locking at rest.

The PRECIBEO GO Elevation Stage is easily controlled through the GO Controller and the GO Motion Windows App. C++ DLLs are available for easy programmatic integration.



## Technical Specification

MODEL	GO ELEVATION STAGE
<b>POSITIONING</b>	
TRAVEL (Z)	+10 mm
POSITION SENSOR	Optical Encoder
SENSOR RESOLUTION	2 nm
MIN INCREMENTAL MOTION	2 nm
BIDIRECTIONAL REPEATABILITY	+/- 100 nm (typ. @ +/- 5mm travel)
STRAIGHTNESS & FLATNESS	+/- 2 µm (typ.)
PITCH	+/- 150 µrad (typ.)
YAW	+/- 150 µrad (typ.)
<b>MOTION</b>	
MAX OPERATING FORCE (PUSH / PULL)	5 N (min.)
HOLDING FORCE (WHEN POWER IS OFF)	6 N (min.)
MAX SPEED (AT NO LOAD)	8 mm/s
MAX SPEED (AT MAX OPERATING FORCE)	5 mm/s (min.)
<b>DRIVE TYPE</b>	
MOTOR TYPE	Piezo Drive
<b>MECHANICAL</b>	
MAX LOAD (IN X,Y OR Z DIRECTION)	0,5 kg
GUIDE TYPE	Crossed Roller Bearings
SIZE	45x45x38 mm
WEIGHT (W/O CABLE & CONNECTOR)	TBD
<b>MISCELLANEOUS</b>	
CABLE	2 m cable (+-5%) with ix Industrial™ connector
MATERIAL	Aluminum

- 10 N versions available on request, with 10 N (min.) Max Operating Force, 11 N (min.) Holding Force, 8 mm/s Max Speed at No Load, 1 mm/s (min.) Max Speed at Max Operating Force.
- High vacuum versions for 10<sup>-6</sup> mbar are available on request.

## Order Information

Please contact us by phone ( [+46 18 700 13 40](tel:+46187001340) ) or email ( [sales@precibeo.com](mailto:sales@precibeo.com) ) for any enquiries.

PRODUCT	DESCRIPTION
GO-ELE	One GO Elevation Stage with Cable and Connector including: <ul style="list-style-type: none"> <li>• 4 M2 screws for mounting the stage to a substrate.</li> </ul>

Disclaimer: Specifications of the product do not constitute a warranty of the properties. They are intended for information purposes only and are subject to change.