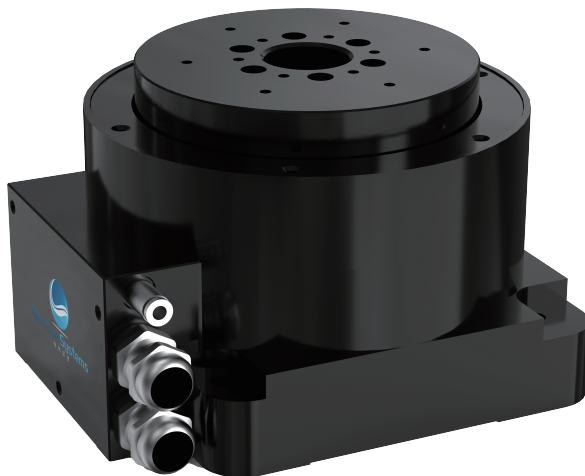


Precision Air Bearing Stage



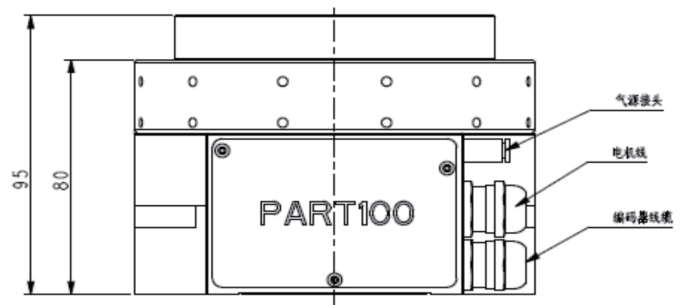
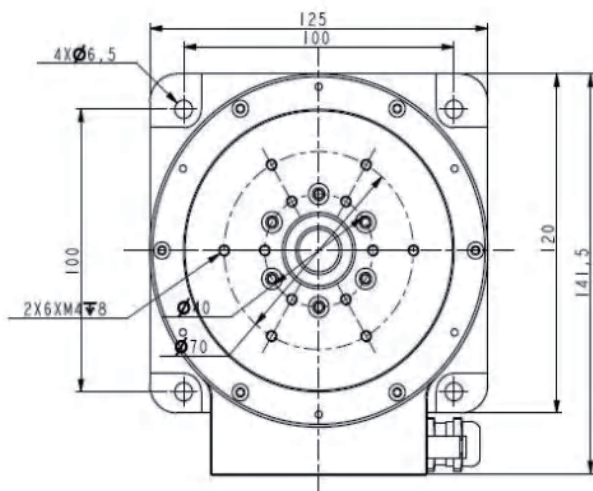
Main Feature

- High load and High precision
- High repeatability and accuracy
- High-level processing technology
- Flexible customization

Performance introduction

The PART100 precision air bearing stage is mainly aimed to the semiconductor equipment and laser fields. The high-precision accuracy provides ultra-smooth motion, arc seconds level of accuracy and absolute repeatability. Superb manufacturing levels ensure the quality and stability. Product weight is low and easier to integrate

Mechanical Dimensional Drawing



Specifications

PART100		
Tabletop Diameter		100mm
Height		95mm
Aperture		25mm
Max Speed		600 rpm@48V
Peak Torque		3.9 N.m
Continuous Torque		3.2 N.m
Accuracy		±1.5arc sec
Repeatability		±1 arc sec
Max Load	Axial	530N
	Radial	170 N
Axial Error Motion (Synchronous)		<100nm
Radial Error Motion (Synchronous)		<200nm
Tilt Error Motion (Synchronous)		<2.5urad
Operating Pressure		0.5Mpa
Air Consumption		<25L/min
Total Mass		4 kg

* Testing Speed 60rpm Testing Standards GBT+17421.7-2016(ISO230-7-2006) and GB/T17421.22000, Testing Humidity 22°±0.5°C