

GO HexStage 2

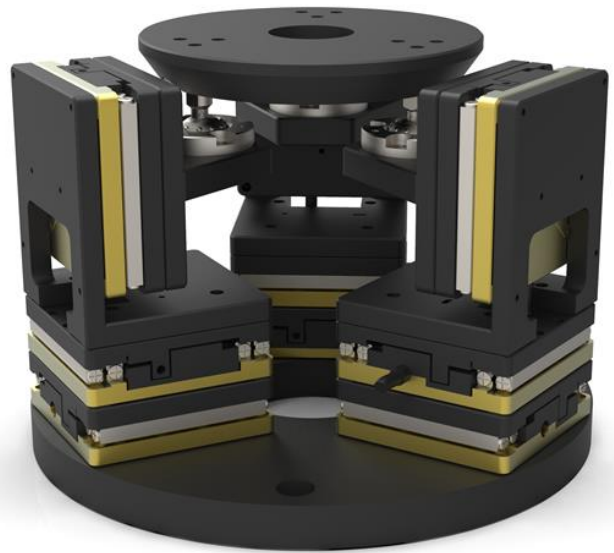
Precise & Powerful

6-Axis Motion

Nanometer Resolution Motion in 6 DOF

The PRECIBEO GO HexStage 2 is based on the precise and powerful GO Stages, which makes the GO HexStage lift up to 1 kg and be self-locking at rest.

The PRECIBEO GO HexStage is easily controlled through two daisy chained GO Controllers and the GO HexMotion Windows App. C++ DLLs are available for easy programmatic integration.



Technical Specification

MODEL	GO HEXSTAGE 2
POSITIONING	
TRAVEL (X, Y, Z)	+5 mm
TRAVEL Θ (X, Y, Z)	+10°
MIN INCREMENTAL MOTION (X, Y, Z)	2 nm
MIN INCREMENTAL MOTION Θ (X,Y,Z)	< 0,1 μ rad
REPEATABILITY (X, Y, Z)	+/- 200 nm
REPEATABILITY Θ (X, Y, Z)	+/- 15 μ rad
MOTION	
MAX OPERATING FORCE (PUSH / PULL)	(X) 10 N / (Y) 8 N / (Z) 15 N (MIN.)
HOLDING FORCE (WHEN POWER IS OFF)	(X) 12 N / (Y) 10 N / (Z) 18 N (MIN.)
MAX SPEED AT NO LOAD (X, Y, Z)	8 mm/s
MAX SPEED WITH MAX LOAD ON TOP PLATE (Z)	> 5 mm/s
DRIVE TYPE	
HEXSTAGE BASE MODULE	PRECIBEO GO Stage LLS4545 (with travel limited to +5 mm)
MECHANICAL	
MAX LOAD CENTERED ON TOP PLATE	1 kg
DIAMETER	138 mm
HEIGHT	95-105 mm
MISCELLANEOUS	
CABLE FROM EACH OF THE 6 GO STAGES	2 m cable (+5%) with ix Industrial™ connector
MATERIAL	Aluminum

Order Information

Please contact us by phone (+46 18 700 13 40) or email (sales@precibeo.com) for any enquiries.

PRODUCT	DESCRIPTION
GO-HEX2	One GO HexStage 2 with Cables and Connectors including: <ul style="list-style-type: none"> 2 daisy chained GO Controllers with USB cable for connection with host computer.

Disclaimer: Specifications of the product do not constitute a warranty of the properties. They are intended for information purposes only and are subject to change.